

LW15 Working Lamp

LED Work Light



Products description and application

LW15 series of LED working lights adopt the lighting technology for engineering vehicles. The high-reliability LED light source is selected, the whole lamp has a long life, safe operation and maintenance-free. The design is light and compact, suitable for heavy-duty industrial lighting places such as various construction machinery, mining machinery and heavy trucks.



Features

- o The lighting technology for engineering vehicles uses high-reliability and high-efficiency LED light source, which has the advantages of high efficiency, long life, energy saving and environmental protection.
- o Integrated design of radiator and lamp housing, strong integrity, sufficient heat dissipation, light weight and good shock resistance.
- o The surface adopts a special spraying process, anti-oxidation, corrosion resistance, fully sealed structure, suitable for high salinity coastal areas.
- o It can realize quick opening and ultra-low temperature cold start (-40°C).
- o The angle of the mounting bracket is adjustable, which is suitable for the work lighting of a variety of engineering machinery models.
- o Wide input voltage range, with over-voltage, over-heating, short-circuit and other protection circuits, and automotive-grade constant current drive, which can cope with complex power supply environments and work more stably.
- o The luminaire has a built-in connector for quick disassembly and assembly.
- o The lampshade and the lens are integrated design, which has the function of protection and condensing, and realizes the precise positioning of the light type used in construction machinery.
- o The product has multiple color temperature options, high color rendering index, good color rendering, eliminating glare and enhancing visual effects.

General Specifications

Standards compliant

GB7000.1/GB2423/DIN40050/GB4208/ IEC60529/ IEC60598/ IEC62262/ EN 55015/ CISPR 15.

Electrical parameters		Mechanical structure parameters	
Operating Voltage	9-16VDC/18-32VDC	Colour	black
Power	14W/16W	Shell material	Aluminum alloy
EMC	IEC61000-4-2 Discharge ±8KV	Shade material	PC
	Contact Discharge ±15KV	Surface treatment	Polyester coating
	IEC61000-4-4 ±1KV	Reference weight	0.4kg
	IEC61000-4-5 ±1KV	Mounting	M10 Stainless steel bolt
	EN 55015/ CISPR 15	Operating temperature	-40°C ~ +85°C
Wiring	Connector/lead wire	Vibration resistance level	IEC60068-2-6 30g
		Impact rating	IEC60068-2-27 60g
		Enclosure rating	IEC60529 IP68/IP69K
		Mechanical collision protection level	IEC62262 IK08
		Salt spray grade	ISO9227 720H/C5 M
Optical parameters			
Light source life	≥50000h		
Color temperature	5700K	2700K	
Luminous flux	5700K: 1400lm/1800lm	2700K: 950lm/1200lm	
Beam angle	40°		

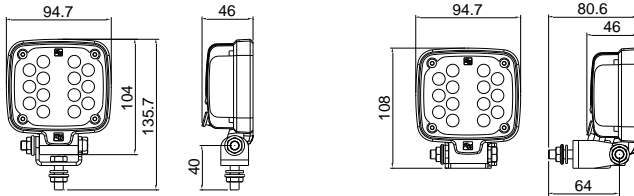
LW15 Working Lamp

LED Work Light



Mounting dimensions

Unit:mm



Installation method:

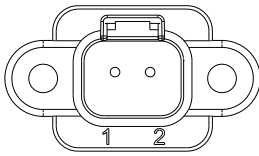
- The lamp adopts DEUTSCH connector DT06-2S.
- For the wiring position, please refer to (wiring diagram) "1" is connected to the power supply "-" pole; "2" is connected to the power supply "+" pole.
- When the user accesses the matching connector, the buckle lock must be in place to prevent vibration from loosening.
- This product is a maintenance-free product, please add a fuse (3-5A) at the power input end.
- Check whether the power supply voltage matches the rated voltage of the lamp.
- The lamp is fixed to the mounting surface with M10 nuts. The mounting surface should be flat and have sufficient mechanical strength. The lamp body holder can be installed at 0°~180°.

Precautions:

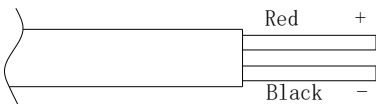
- Please connect the rated working voltage when in use, and do not connect the positive and negative poles reversely.
- The mounting bracket and the lamp body must be tightened before use.
- The temperature rises when this product is working, which is normal.
- Using PC material components (such as lampshade, housing), can not directly or indirectly contact with industrial alcohol, banana water, isopropanol, carbon tetrachloride, cyclohexanone and other organic solvents, otherwise it will be corroded and cracked.

Wiring diagram

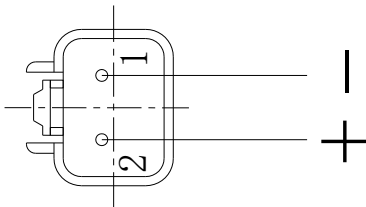
1. Connector connection method



2. Lead wire connection method



3.DT06-2S



How to Wiring and use:

- Built-in connector: 1 "positive" 2 "negative" (default factory setting)
- Customizable requirements: 1 "negative" 2 "positive" or other connectors

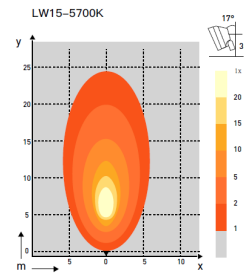
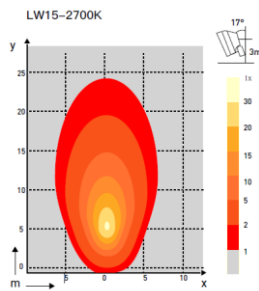
LW15 Working Lamp

LED Work Light

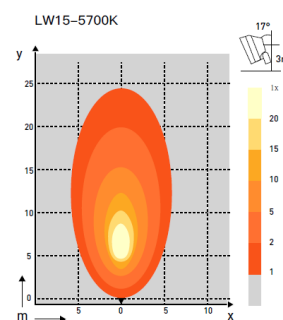
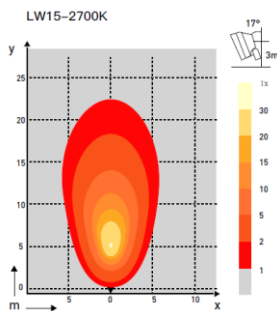


Light distribution pattern

1.14W



2.16W



Precautions

1. The PC material parts of the product should not be in direct or indirect contact with industrial alcohol, banana water, isopropanol, carbon tetrachloride, cyclohexanone and other organic solvents, otherwise there will be a risk of corrosion and cracking.
2. Please connect the rated working voltage when using.
3. The lamps are not suitable to be covered by heat insulation materials and keep good ventilation.
4. The lamp is not suitable to be directly installed on the surface of ordinary combustible materials.
5. When using the lamp, do not look directly at the light source.
6. When the lamp is in use, there is a certain temperature rise on the surface of the shell and lampshade, which is a normal phenomenon.
7. To replace and maintain the lamps, the power supply should be cut off first, and the lamps should be performed by professionals after the lamps have cooled down.
8. Please read the manual carefully before use, if you have any questions, please contact our company.

Selection table

LW15-①②③④⑤⑥

①Voltage	②Power	③CCT	④Beam angle	⑤Outgoing way	⑥Installation method
B 18-32VDC	14 14W	C 5700K	N 40°	1 Connector(1"+2"-)	A Mounting brackets(M10)
C 9-16VDC	16 16W	W 2700K			

How to Order

P/N	Model	Voltage	Power (W)	CCT	Beam angle	Outgoing way	Installation method	Other

Thank you for using our products. As a professional brand for signal transmission and high-quality industrial lighting, Nanhua Electromechanical is trusted and loved by users in different industries all over the world. Please use this product correctly after reading and understanding the manual. Incorrect installation and use may cause fire, electric shock and other hazards. Due to product improvement, specifications and style changes may be changed without notice, please understand. ©NANHUA Electronics Co., Ltd. All rights reserved. Shanghai Nanhua Electromechanical Co., Ltd. All rights reserved. www.nanhua.com