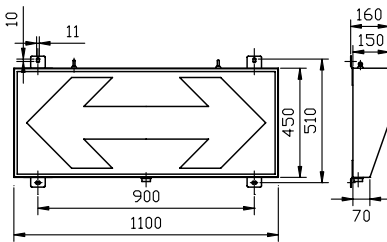
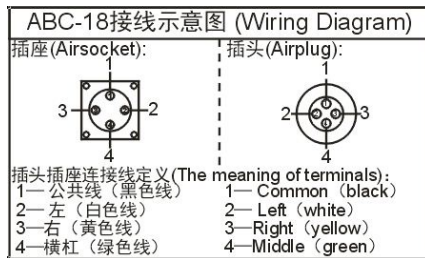


Mounting dimension (Unit:mm)


Wiring diagram


Application pictures


Applications

Specially design for all kinds of harbors machinery, engineering machinery and hoisting machinery or road traffic directions.

Main Functions and features

- Main body use cold rolled sheet with powder coat paint finishes, providing environmental protection, corrosion resistance and maintenance free.
- Super bright LED cluster as bulbs, providing external long life.
- Air plug (YD28KZTP) and air socket (YD28J4ZTP) as connector, ease installation and wide application.
- Adopt transparent safety glass as front panel, providing high transmittance and firmly seated.
- Two arrowhead indicators on one display, three indicator states, easy operation.

Specifications:

Operating voltage	DC18-24V	Electric current	0.6-1.3A
Power	10-31W	Color	Red
Visible distance	>200m	LED Lifetime	≥100,000h
Cable length	1.5m		
Operating temperature:	-30°C ~ +70°C	IP Protection	IP65
Relative humidity	10% ~ 95% (no condensing)	Weight	32kg
Material	Main body : Cold rolled sheet+ powder coat		

Installation and Operation

- Check whether the operating voltage complies with the rated voltage of the warning light.
- Secure the light body on a smooth surface with enough mechanical strength using Four M10 screws. Mounting surface should be in a line with the axes of lamp body.
- Connect the control line according to the wiring diagram.
- Verify the connections of the power line and control lines before power on.